

As our homes have become such an important place for us over the last year, this worksheet will take inspiration from where we live to help us create a paper sculpture of HOME...

Our HOME is our place of safety, refuge and sanctuary. It is a place where we are shielded from the elements, where we are fed and rested. It is where we create memories.

- How do you feel about your home?
- How has it changed for you during this unusual time we find ourselves in?
- Do you have a favourite room in your home?
- Do you know what year your house was built?



During the long days of lockdown in 2020 the radar station and the landscape around it became very important to me. Watching the sun cast shadows over the building inspired me to take a series of photographs and make drawings in my sketchbook documenting this time.



My home and art studio on the Isle of Wight are located on the site of a former Royal Air Force radar station constructed in 1941 as part of a World War 2 coastal defence building. The site played an important role during the Second World War, providing early warnings of incoming bomber attacks.

- Lets start by looking at our home
- Can you go outside and walk around it?
- Look at the architecture of the building
- look at the shapes that make up the building
- Look at the outline of your home, this is its silhouette

Materials we will need for our 'Sculpture of HOME'

- sheet of A4 plain paper
- thin cardboard (packaging or cereal boxes are good)
- a pencil to sketch
- black marker pen
- coloured pencils or paints
- scissors



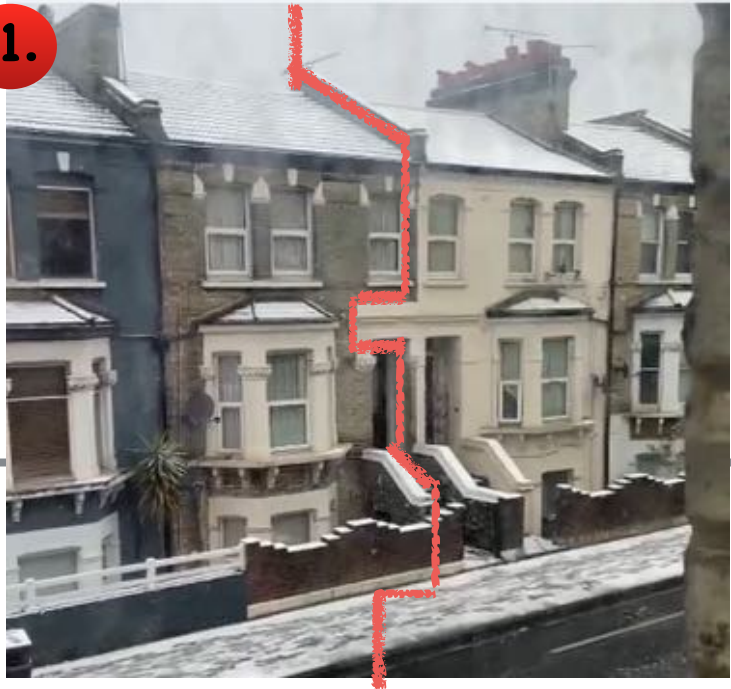
If you can't get outside perhaps look out through an upstairs window across the rooftops of other buildings - use the shape of the houses around you...

Lets look at this street scene - imagine drawing a line down through the building

- across the roof
- down past the window
- back across the top of the door
- down along the doorframe
- across the front wall
- down the steps to the footpath

Can you draw an imaginary line along the edge of your home?

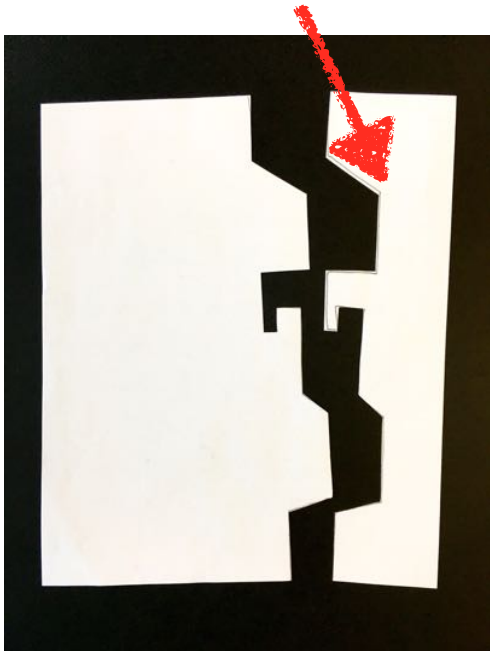
1.



2.

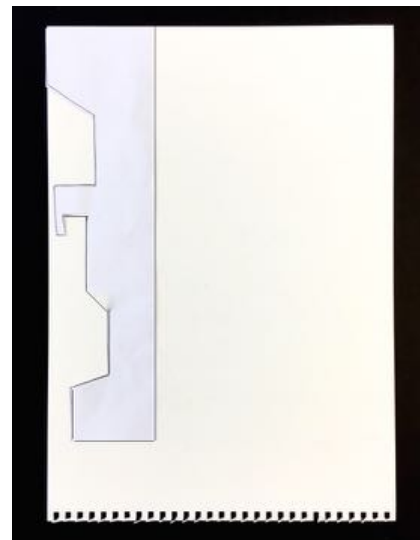
Now draw this imaginary line in pencil on your sheet of A4 paper

- cut this shape out
- this is your template to draw around

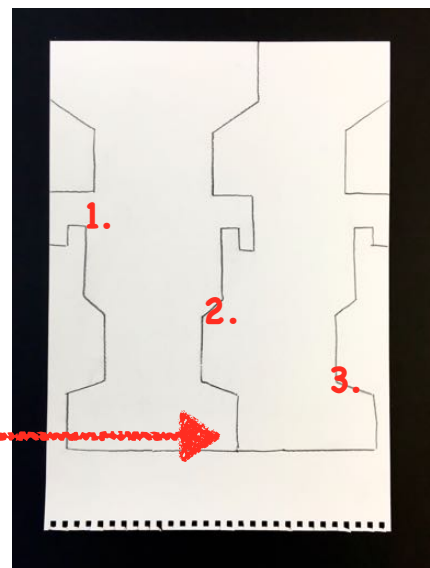


3.

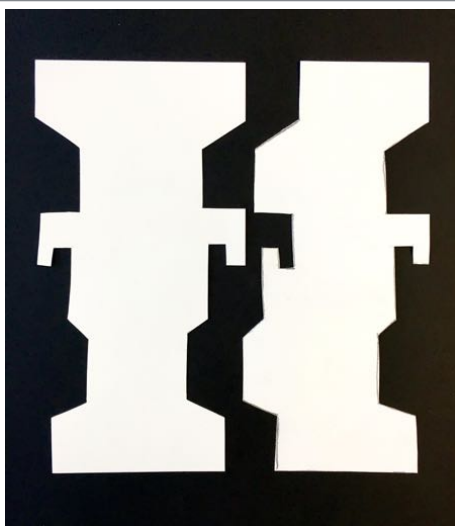
- Place the template shape onto the edge of your sheet of cardboard (or cereal box)
- Draw around it
- Flip the shape over and draw around it again



- Do this one last time - you will now have three 'edge' lines across your sheet of cardboard



4.

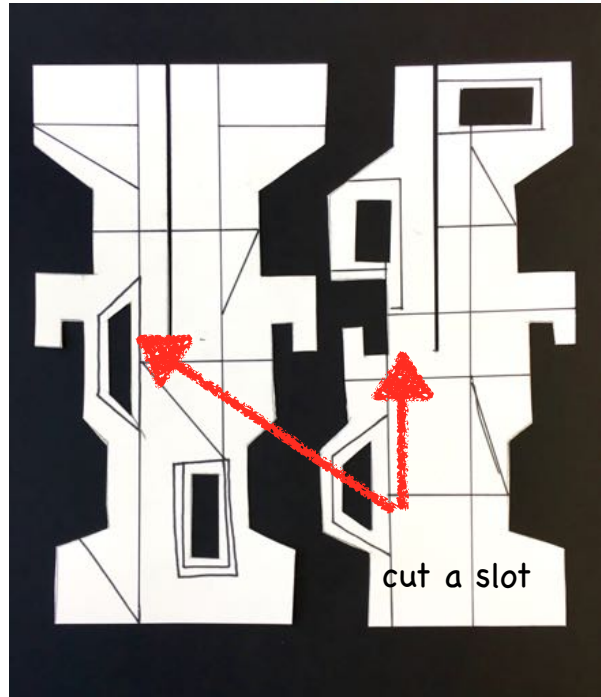
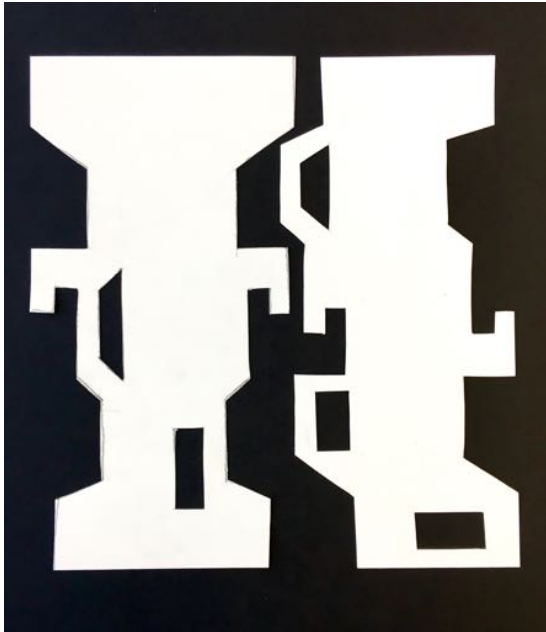


- Cut along the lines to create two shapes

- Have a look at the dutch artist PIET MONDRIAN for colourful grids
- Have a look at the French-Swiss architect LE CORBUSIER for geometric forms

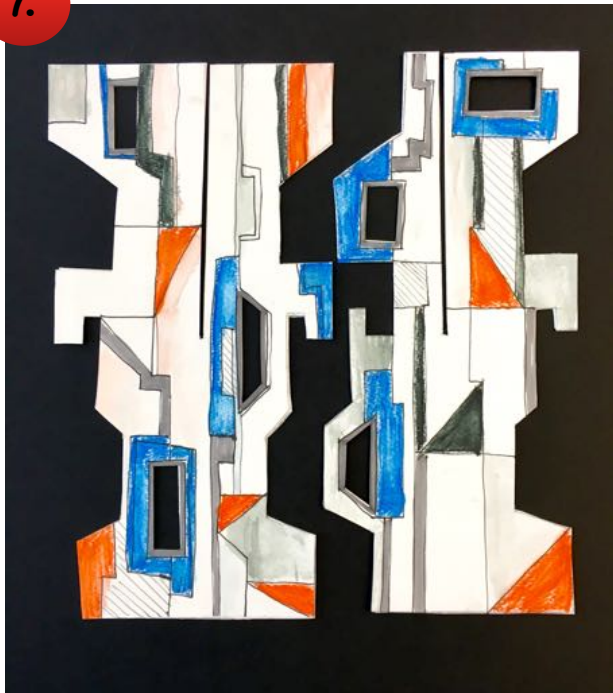
5.

- Think about your building...add some doors and windows - cut out these openings

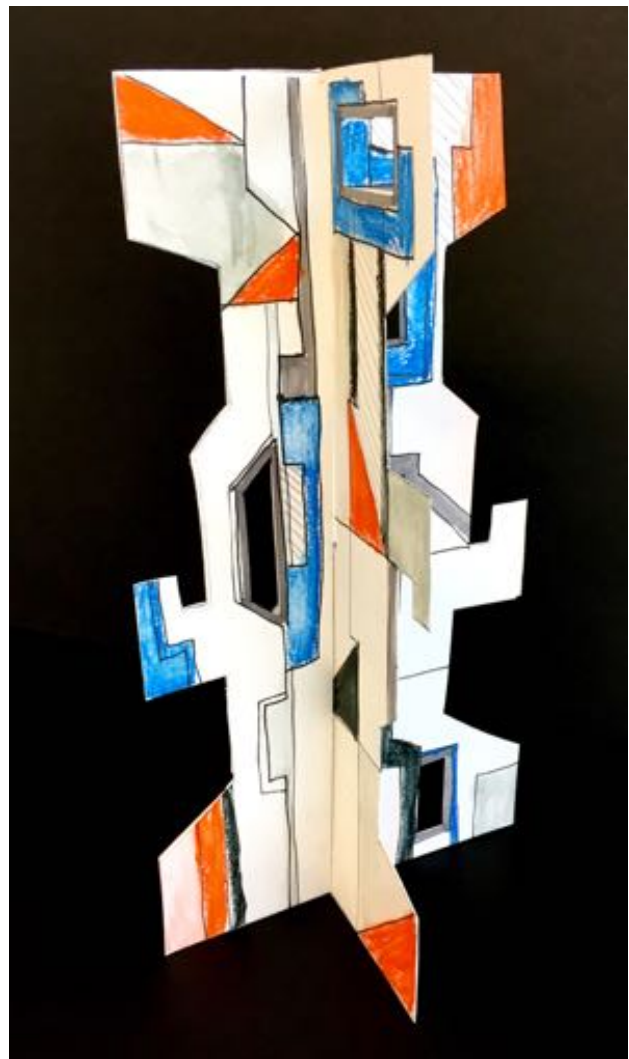


- Now its time to add a design to your sculpture pieces
- Think of the building and how the doors and windows line up to form a grid
- Draw this grid onto your shaped cardboard
- Cut a slot into each shape

7.



- look at the colours on the building the brickwork and the paintwork
- slot your SCULPTURE OF HOME together once you have decorated all sides...



This worksheet was made possible by funding from:

Daisie Rich  
Trust